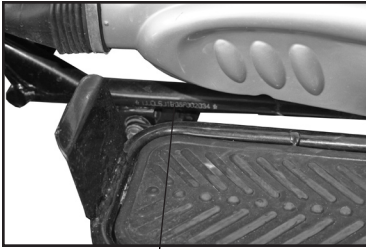


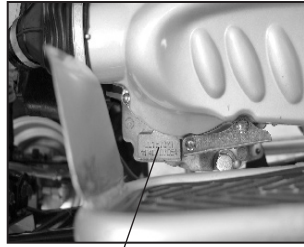
# LOCATION OF LABELS AND SERIAL NUMBERS

## SERIAL NUMBERS

You need to know the frame and engine serial numbers to get title documents for your ATV. You also need these numbers to help your authorized service center or Baja Motorsports order parts.



The frame number is stamped on the frame between the front wheels.



The engine number is stamped on the left side of the engine case below the cylinder.

FRAME SERIAL #

ENGINE SERIAL #

## LABELS

Read and follow all of the warning labels on your ATV. Make sure you understand all the labels. Keep the labels on the ATV. Do not remove them for any reason. If a label comes off or becomes difficult to read, you should get a replacement by contacting Baja Motorsports

